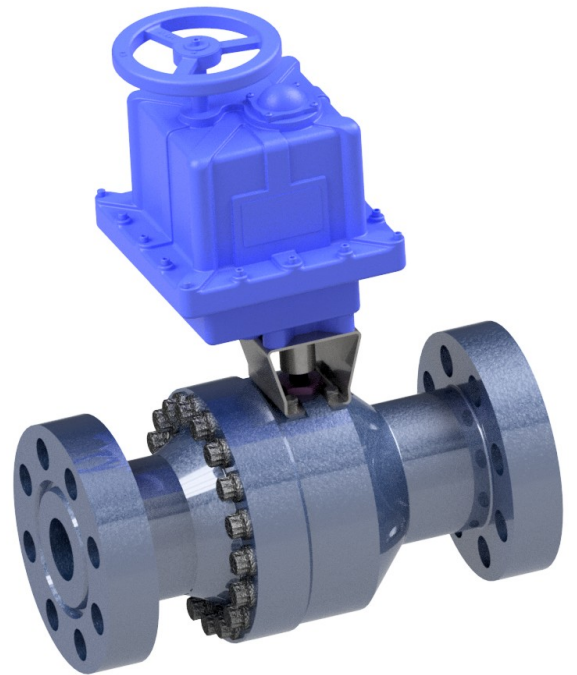




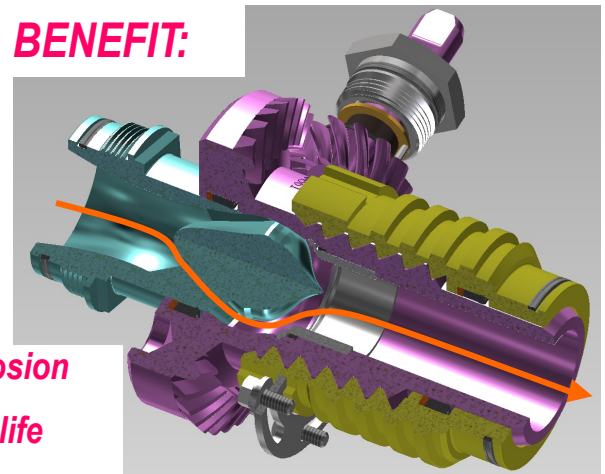
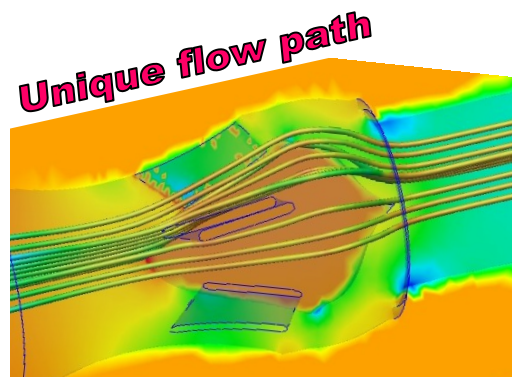
**The most accurate and robust
choked flow control valve available**

**HIGH CAPACITY / COMPACT DESIGN
SEVERE SERVICE / DP up to P1**



FEATURING

- Multi-turn valve stem for precise control with low torque requirement
- Compliance with API 6A or ASME B16.34 for materials and construction
- Nitrocarburized 17-4PH stainless steel trim components
- Ultralube™ coated flow path actuation components
- Tungsten carbide or 440C seat
- End configurations to suit the application, 2" to 8" line size
- Rotary-to-linear internal actuation employing the helical bevel gear drive system (U.S. pats 9,103,421, 9,404,561, Intl Pub No WO 2014/186437 A1)
- Three versions rating to 5000 psi / 5000 psid, up to 450F:
Model 15, 2" - 4", up to 70 C_v
Model 21, 3"-6", up to 130 C_v
Model 32, 4"-8", up to 300 C_v



TotalValve.com

1300 East Memphis Broken Arrow, Oklahoma 74012

Toll Free: 800.324.7036 Phone: 918.258.7035 Fax: 918.251.6426 email sales@totalvalve.com